



## 134A Woodmere Avenue

Watford, WD24 7LW

**Asking Price £650,000**

Don't miss out on this opportunity on Woodmere Avenue in Watford, this newly built house offers a perfect blend of modern living and convenience. With a high standard of finish throughout, this property boasts two spacious reception rooms, ideal for both relaxation and entertaining. The home features three well-proportioned bedrooms, providing ample space for families or those seeking a comfortable guest room.

The property includes two contemporary bathrooms, ensuring that morning routines are both efficient and enjoyable. Off-street parking is available, adding to the convenience of this lovely home.

Situated in close proximity to major transport links such as the M1, M25, and A41, as well as Watford Junction, commuting to London and beyond is a breeze. Additionally, residents will appreciate the nearby shops and supermarkets, making everyday errands simple and accessible.

This house is not just a home; it is a lifestyle choice, offering both comfort and practicality in a vibrant area. Whether you are a first-time buyer or looking to settle into a new family home, this property is sure to impress. Do not miss the opportunity to make this stunning house your own.

### Viewing

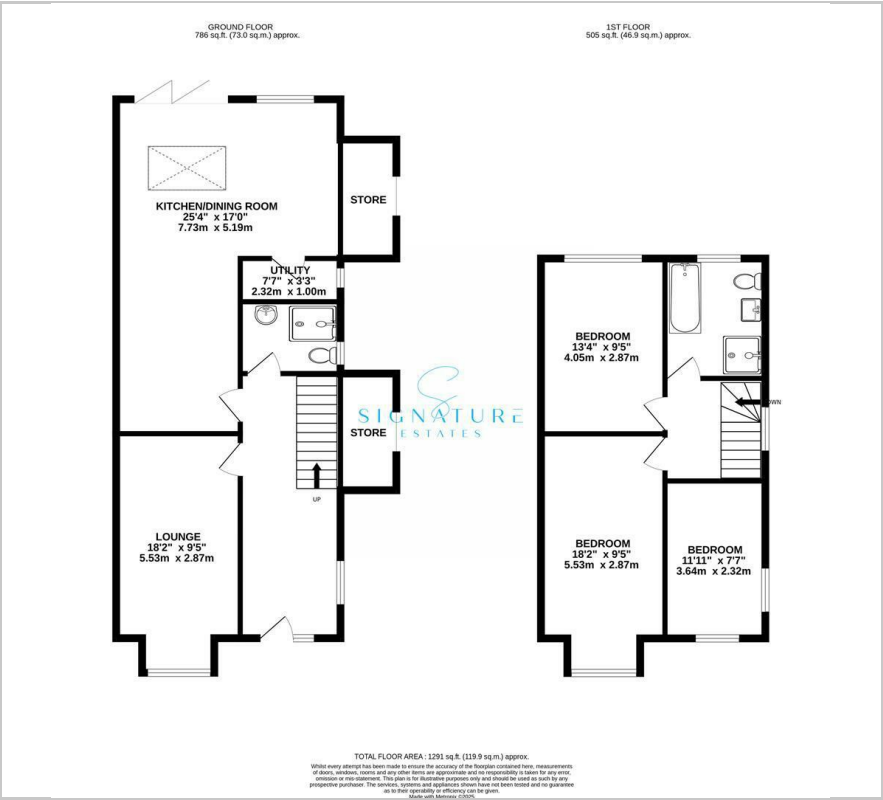
Please contact our Abbots Langley Office on 01923262666 if you wish to arrange a viewing appointment for this property or require further information.

- New Build
- Close Vicinity To A41, M1, M25 And Watford Junction Station
- Semi Detached Family Home
- Three Bedrooms
- High Standard Of Finish
- Two Bathrooms
- Modern Style Kitchen/ Dining Room
- Off Street Parking
- Viewing Is A Must!
- EV Charger





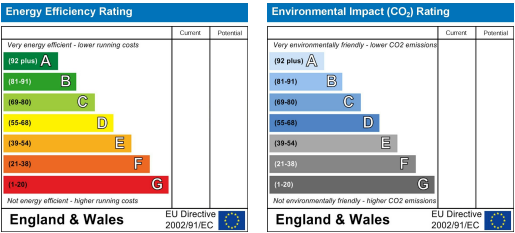
Floor Plan



Area Map



Energy Efficiency Graph



These particulars, whilst believed to be accurate are set out as a general outline only for guidance and do not constitute any part of an offer or contract. Intending purchasers should not rely on them as statements of representation of fact, but must satisfy themselves by inspection or otherwise as to their accuracy. No person in this firm's employment has the authority to make or give any representation or warranty in respect of the property.